

# Infrared Scanning Services

## OUR TECHNOLOGY

Jantech utilizes Flir T400 Thermo Cams which are the first thermographic cameras to provide both thermal and visual imaging. The Flir analysis and reporting software is state of the art and allows problems to be located quickly and accurately.

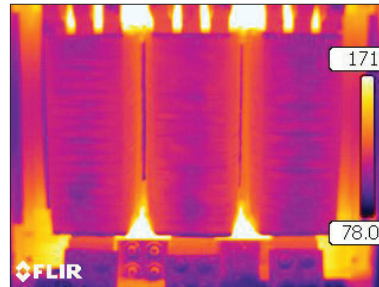
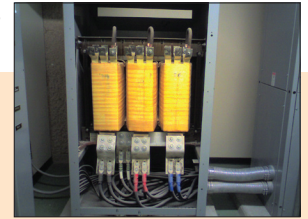
## OUR PEOPLE

Jantech's staff of infrared thermographers are trained and certified to correctly assess the images produced by the infrared camera. Today's infrared cameras require special training to operate and make accurate judgments on the condition of equipment.

## WHY JANTECH

Jantech has been in the business of maintaining power systems at mission critical facilities for over 25 years. Our knowledge of the complete power system from service entrance to low voltage distribution uniquely enables us to quickly identify and correct component and connection heating problems. We have the state of the art tools, knowledge and experience to identify heat related issues before they cause failures and downtime.

The most common failure mode for electrical equipment is failure due to the buildup of heat at loose, corroded, or overloaded electrical connections. Infrared scanning was developed to detect these issues before they lead to catastrophic failure. Infrared cameras convert the invisible heat radiated by failing electrical equipment into visible light images. This technology allows equipment to be assessed while in service (on-line), eliminating the need for disruptive power outages. The ability to detect radiated heat also allows inspection of electrical connections that are not easy to access by other means.



Jantech's Infrared Scanning Service provides predictive failure analysis of electrical systems from service entrance to load, including:

- Service Entrance and Distribution Transformers
- Low Voltage Switchgear/Switchboards
- Automatic Transfer Switches (ATS)
- Generators
- UPS System
- Flooded and Valve Regulated Battery Systems
- Static Transfer Switches (STS)
- Power Distribution Units/ Remote Power Panels (PDU/ RPP)
- Cabling
- Distribution (Power) Panels
- Surge Protection (TVSS etc.)
- Power Factor Correction Devices

## Save Money

- Prevent Equipment Failures
- Save on Emergency Repairs
- Reduce down time
- Plan and schedule repairs
- Improve electrical and mechanical system efficiency

## Save Time

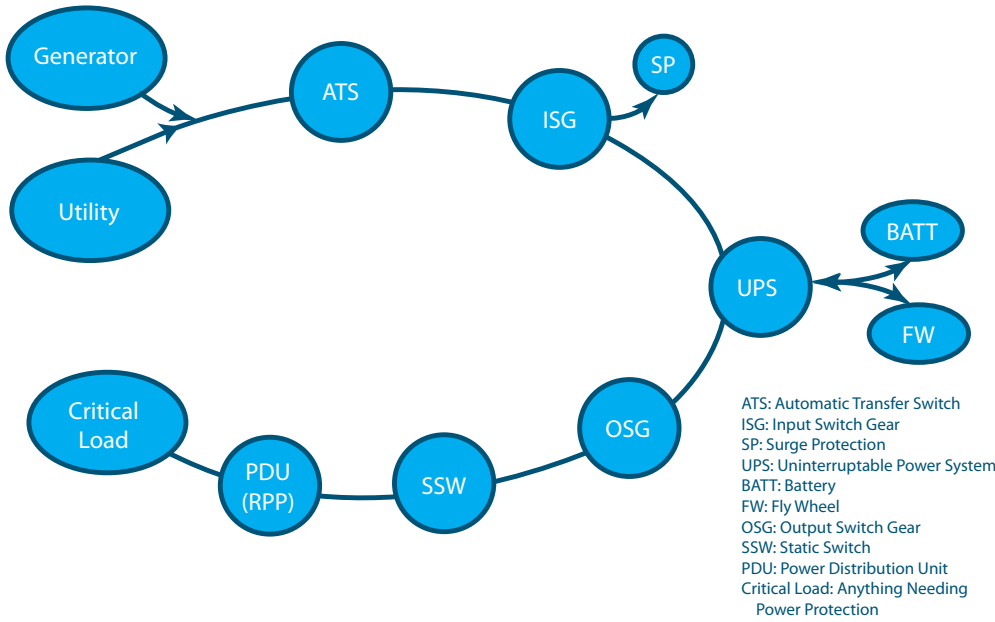
- Identify and prioritize areas requiring preventive maintenance
- Avoid disruption of services by using non-invasive technology
- Benefit from technology that is quick and accurate for identifying potential hazards
- Reduce emergency service calls

## Improve Safety

- Identify fire hazards
- Reduce risk of catastrophic system failure

1-800-JANTECH  
www.jantechups.com

JANTECH SERVICES, INC.



**REGIONAL HEADQUARTERS**

**Southeast\***

11315 Challenger Avenue  
 Odessa, FL 33556  
 727-376-9399 • 800-452-6832  
 Fax: 727-376-9499  
 Email: jnizborski@jantechups.com

**NY Metro**

333 S. 1st Street  
 Bangor, PA 18013  
 610-588-5458  
 Fax: 610-588-5459  
 Email: brett@jantechups.com

**Mid-Atlantic**

2821 Rowland Road  
 Raleigh, NC 27615  
 919-872-4556 • 888-452-6831  
 Fax: 919-872-4776  
 Email: vpudelski@jantechups.com

**Northeast**

119 E. Central Street, Suite C  
 Franklin, MA 02038  
 508-520-3360  
 Fax: 508-520-6680  
 Email: brichert@jantechups.com

*\*Corporate Headquarters*



**SERVICES**

- UPS Maintenance
- Battery Maintenance, Installation & Disposal
- Infrared Thermography
- Load Bank Testing (AC & DC)
- Power Quality Audits and Consulting
- Site Acceptance Testing
- Turnkey Installations
- Emergency Call-outs

**PRODUCTS**

- New UPS
- New Batteries
- Refurbished UPS
- Battery Monitoring
- Surge Protection
- PDU's/RPP's
- Static Switches
- Maintenance Bypass
- Panels
- Parts